

TS100 RESIDENTIAL TRACK SYSTEM

THE QUALITY SOLUTION



Patent

CONTENT

TS100	3
Characteristics and options of TS100	4
Single person fitting	10
Item numbers	12
Locks	20
Packaging	22



Built in Europe



Safe to use



Sustainable



TS100 RESIDENTIAL TRACK SYSTEM

The quality solution for any installation situation

All of our systems are constructed in such a way that the garage door opens and closes smoothly. The TS100 is equipped with pre-fitted and pre-tensioned extension springs, with a minimum installation space of 100 mm at the lintel and 85 mm at the sides.

Smart Connection

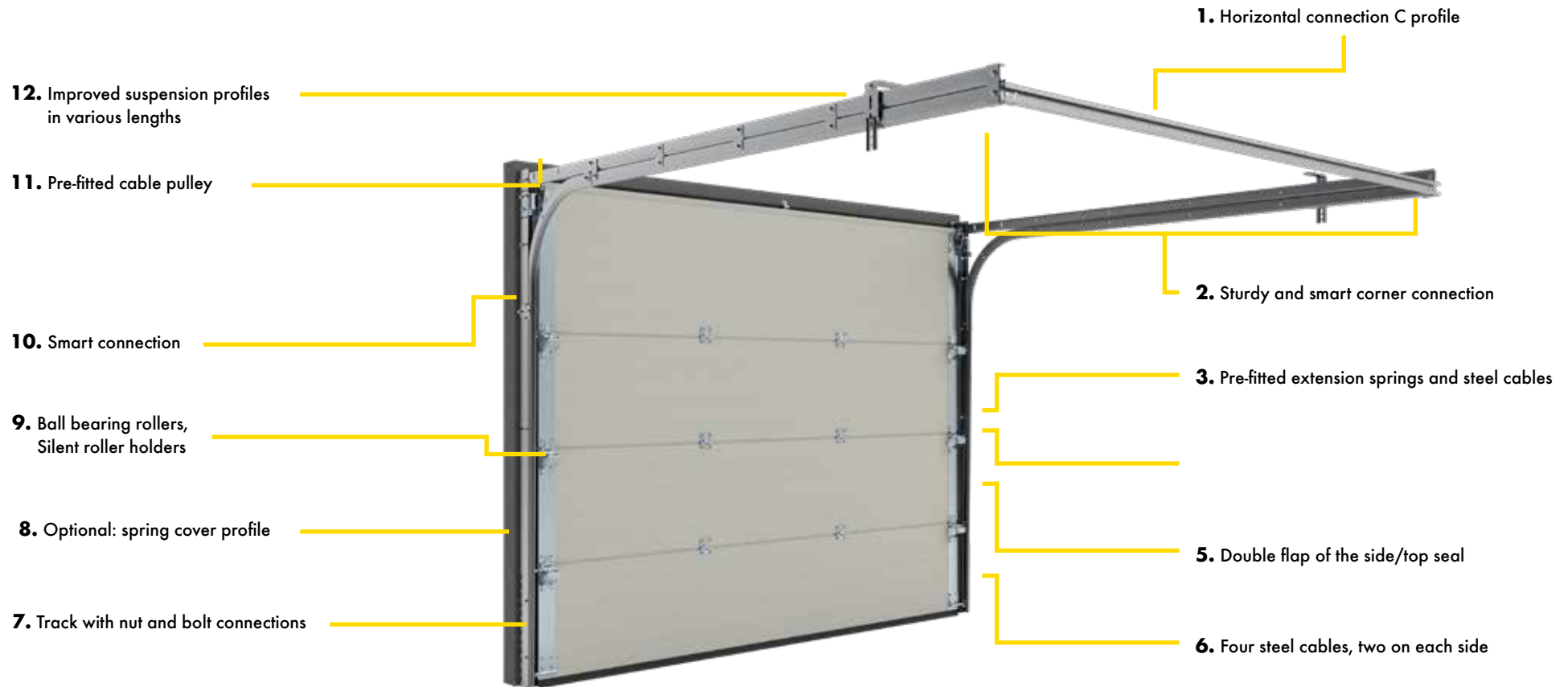
Our track systems have all been designed with an eye for detail. A good example of this is our patented Smart Connection (R) system.

A smart connection ensures a seamless connection between all tracks. The result is a connection which guarantees silent door movement and prevents unsafe, sharp edges.

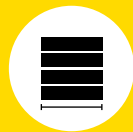
Robust quality

We use only the best quality materials to manufacture our innovatively constructed track systems with nut and bolt connections, to guarantee a long working life.

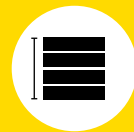
CHARACTERISTICS AND OPTIONS OF TS100



Single person fitting



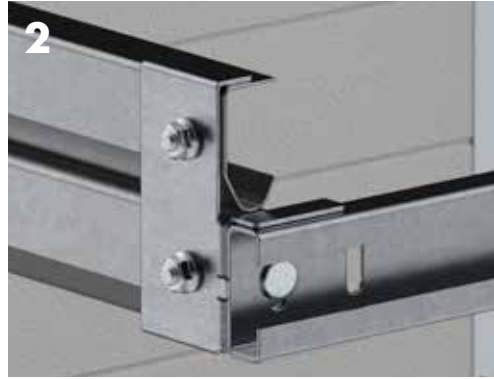
Max. 6000 mm wide



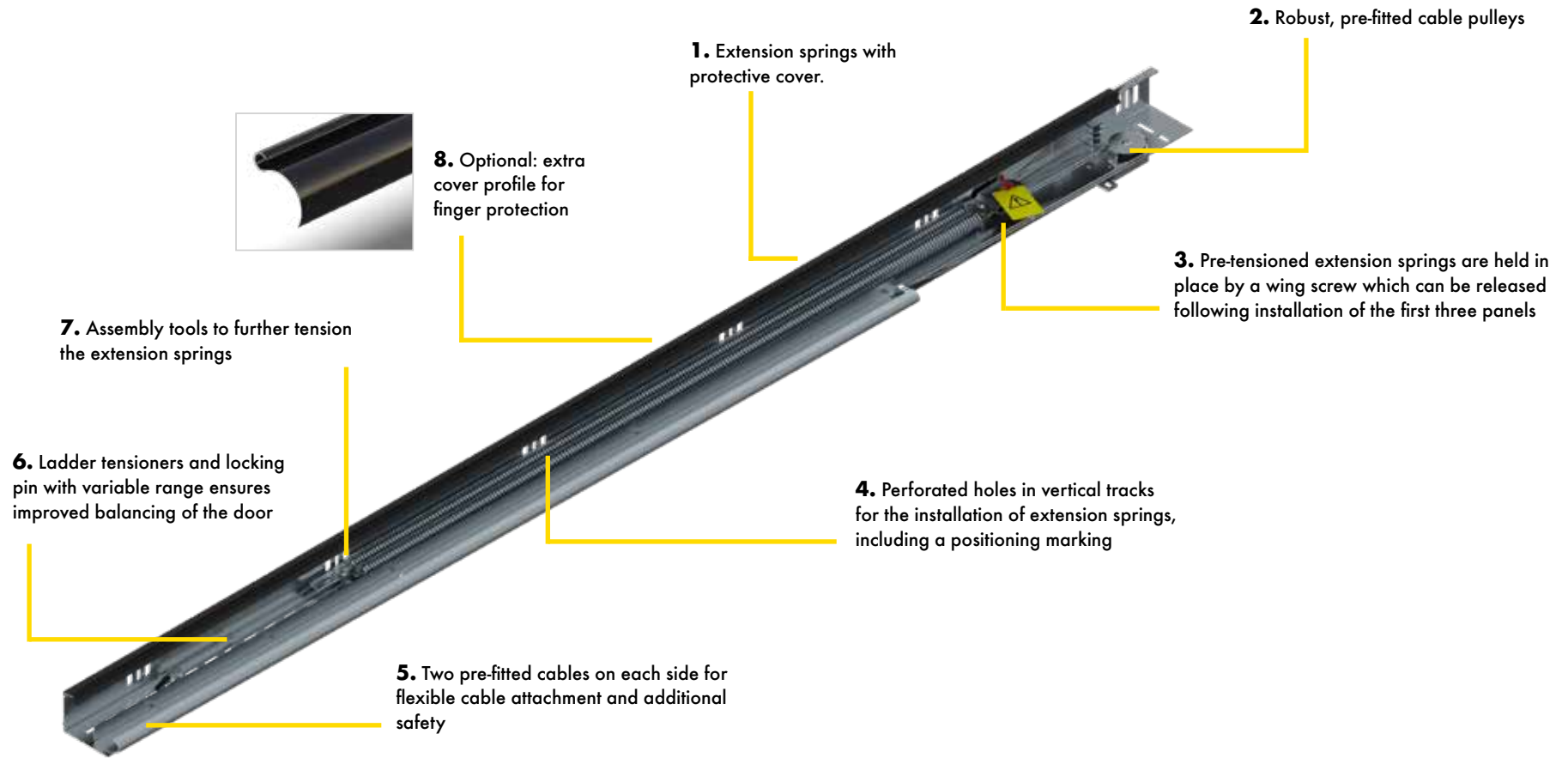
Max. 3000 mm high



Max. 150 kg



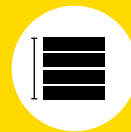
CHARACTERISTICS AND OPTIONS OF TS100



Single person fitting



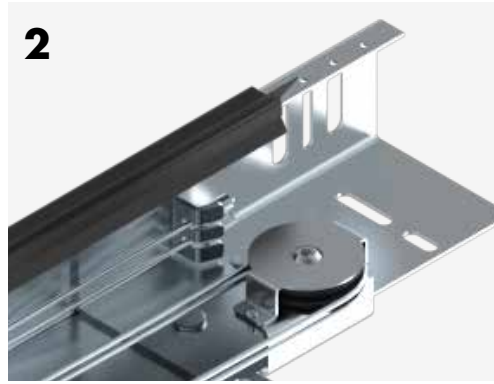
Max. 6000 mm wide



Max. 3000 mm high



Max. 150 kg





100 mm free head room required



Pre-tensioned extension springs
Pre-fitted extension springs and cables



Max. 150 kg



Max. 6000mm width



Max. 3000mm high



Ball bearing rollers



Option: Silent Rollers



Smart connection curve connections



Flexible bolt-nut connections



Industrial strength hinges



2D side/top seal for better insulation.



Silent spring with protective cover for extra safety and silent door movement



Single person fitting

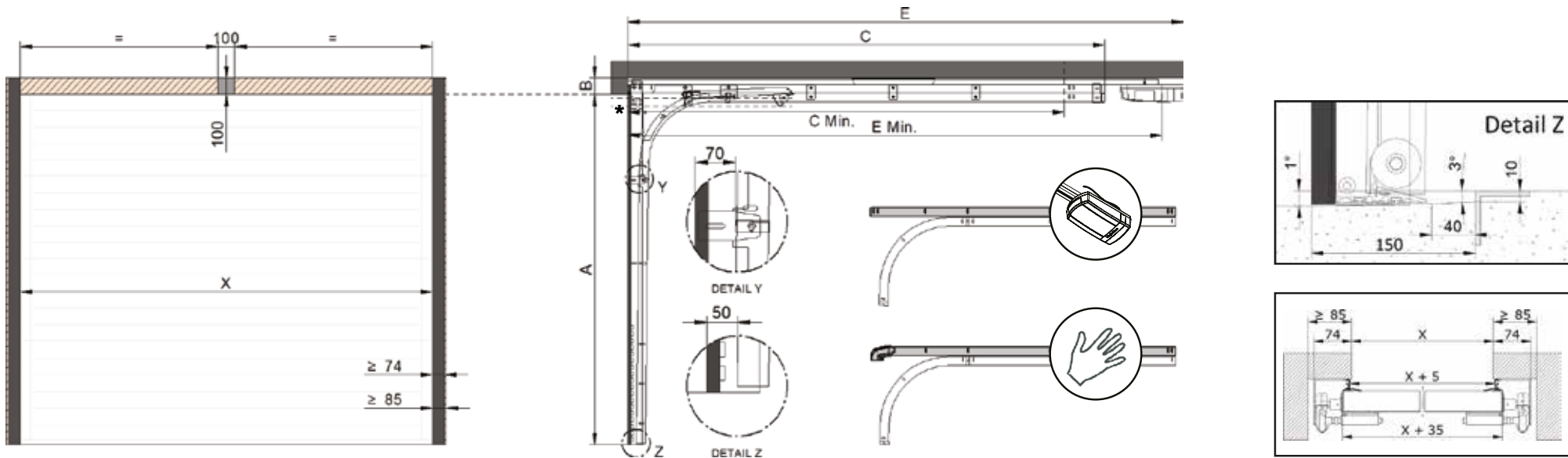
TS100 FEATURES



The TS100 is a track system requiring free head room of only 100 mm, fitted with extension springs. These extension springs are positioned in the vertical track. Thanks to the pre-fitted cables and springs and pre-tensioned springs, the system can be very quickly installed.

The TS100 is supplied standard with a 60 mm black lintel profile as top closure and two suspension profiles to attach the horizontal tracks to the ceiling. Your optional choices include various types of hinges to suit your type of panel, as well as a 'Silent Spring' package containing a cover profile and Silent Rollers, extra suspension profiles in various lengths, operators, mounting systems and accessories, varying from handles to locks.

The standard TS100 set is provided in a sturdy and stackable packaging. Furthermore, the TS100 is available in bulk, better known as ERA.



	Necessary mounting surface
	Free top- and sideroom required
	Motorrail on lintel

X	Daylight width	≤ 6000mm
A	Daylight height	1875 - ≤ 3000mm
B	Free headroom	≥ 100mm
C	Free mounting depth: Manually operated	
E	Free mounting depth: Motor operated	
A/X	Up to 150 kg.	

	C	
A ≥ 1875 - ≤ 2000 mm	2625 mm	
A > 2000 - ≤ 2125 mm	2750 mm	
A > 2125 - ≤ 2250 mm	2875 mm	
A > 2250 - ≤ 2375 mm	3000 mm	
A > 2375 - ≤ 2500 mm	3125 mm	
A > 2500 - ≤ 2625 mm	3250 mm	
A > 2625 - ≤ 2750 mm	3375 mm	
A > 2750 - ≤ 3000 mm	3625 mm	
	E (High-Line)	E (Select-Line)
A > 1875 - ≤ 2125 mm	3375 mm	3350 mm
A > 2126 - ≤ 2320 mm	3885 mm	3445 mm
A > 2321 - ≤ 2634 mm		4135 mm
A > 2635 - ≤ 2918 mm	4170 mm	
A > 2918 - ≤ 3000 mm	4510 mm	

C Minimaal (*) Doorleaf below daylight Shorten Horizontal track	A + 225
E Minimum Shorten Horizontal track + Operator rail	A + 1120
Panel thickness	40 mm
Free sideroom	85 mm
Track below daylight	50 mm

	* Doorleaf below daylight (mm)	
	Manually operated	Motor operated
X ≤ 3000	Default 170	Default 0
X ≤ 4500	Default 180	Default 10
X ≤ 5500	Default 220	Default 80

Modifications reserved. No rights can be derived from these drawings. Based on 610 mm panels.

SINGLE PERSON FITTING

The TS100 system is pre-fitted wherever possible. A number of smart choices make the system easy and safe to install by a single fitter. This makes it the ideal system when there is a shortage of personnel.

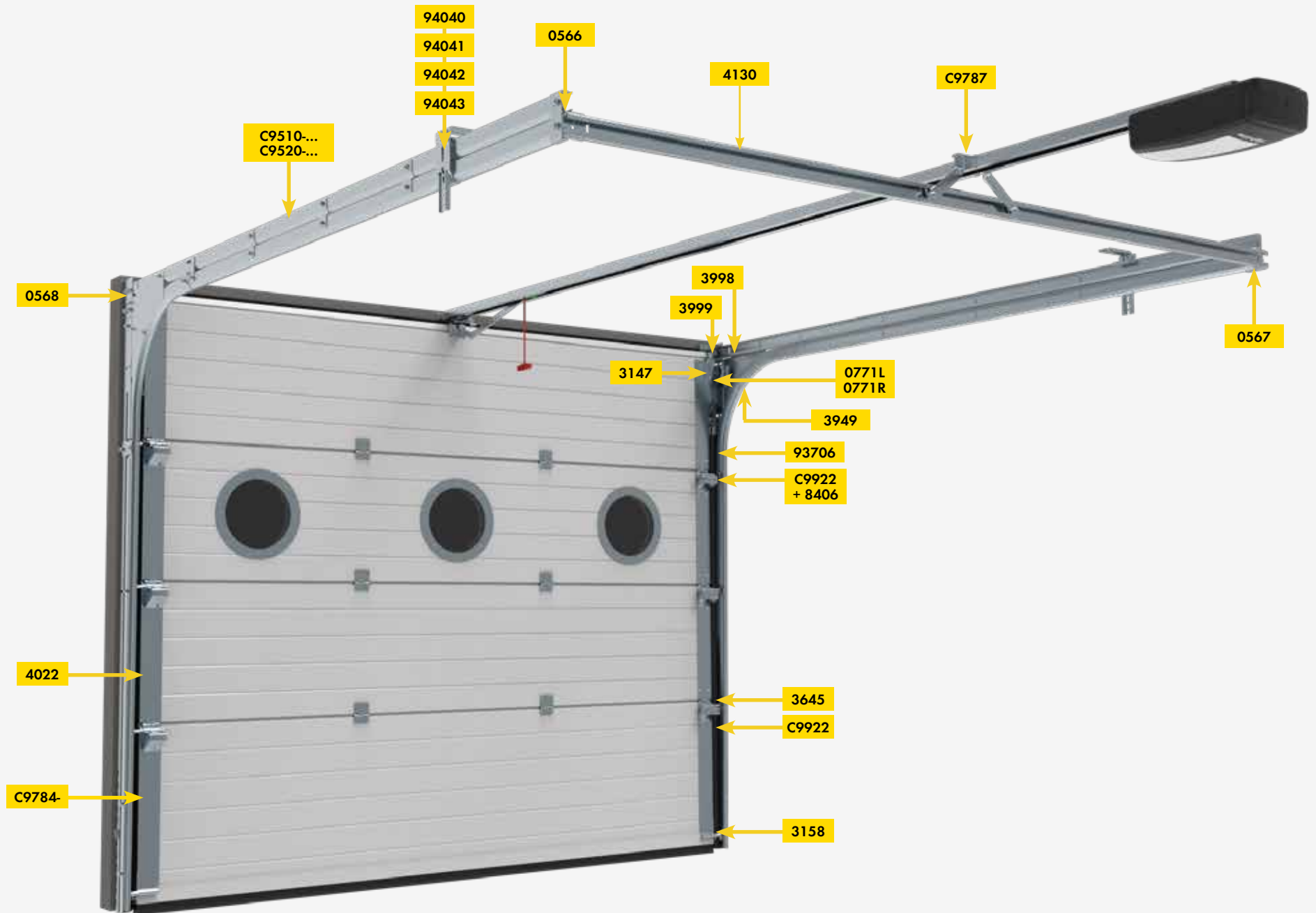


Watch the video

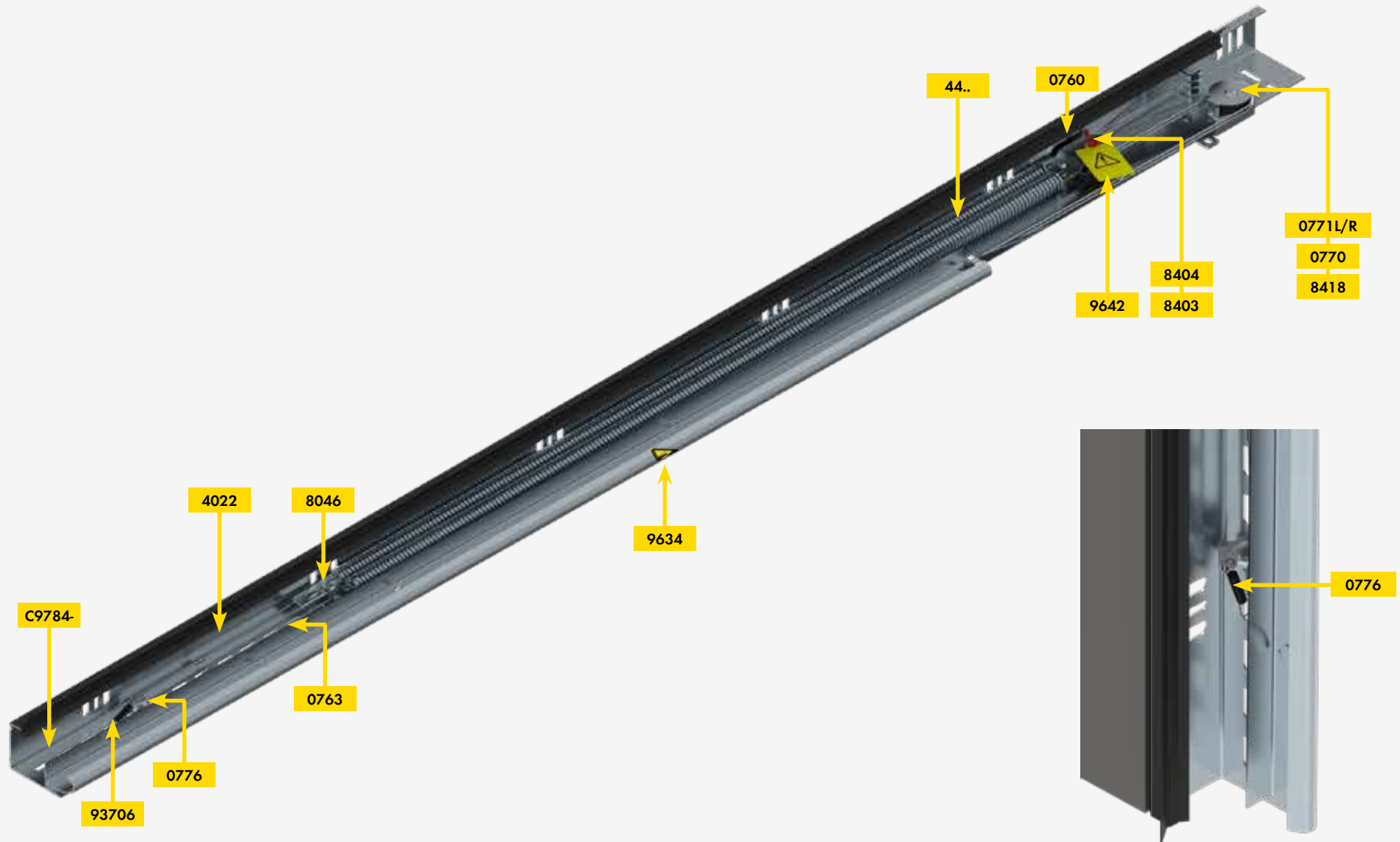




ITEM NUMBERS TS100



PRE-FITTED AND PRE-TENSIONED EXTENSION SPRINGS



UNIVERSAL TRACK FOR MOTORISED AND MANUAL OPERATION

1. Motorised doors



2. Manually operated doors

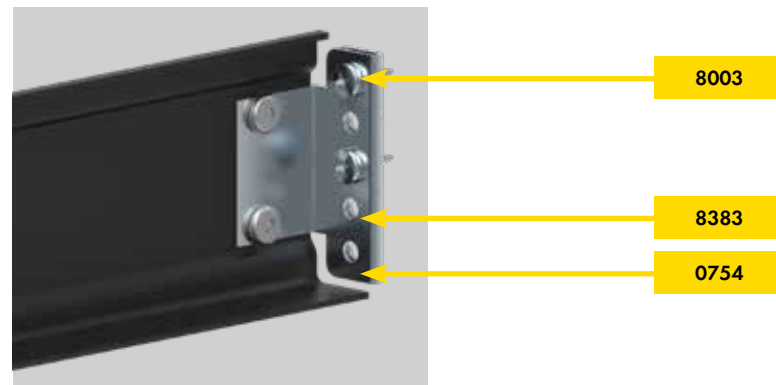
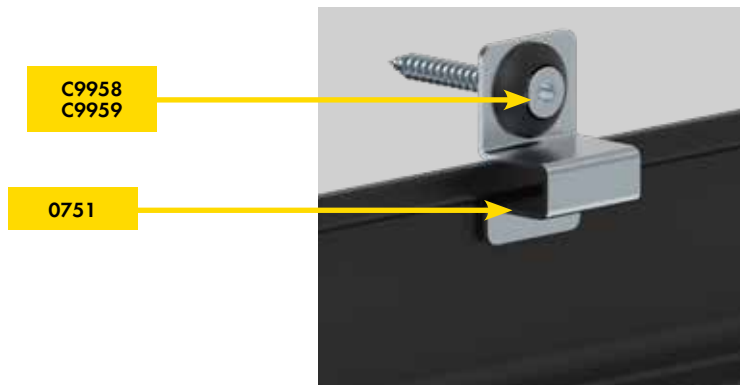
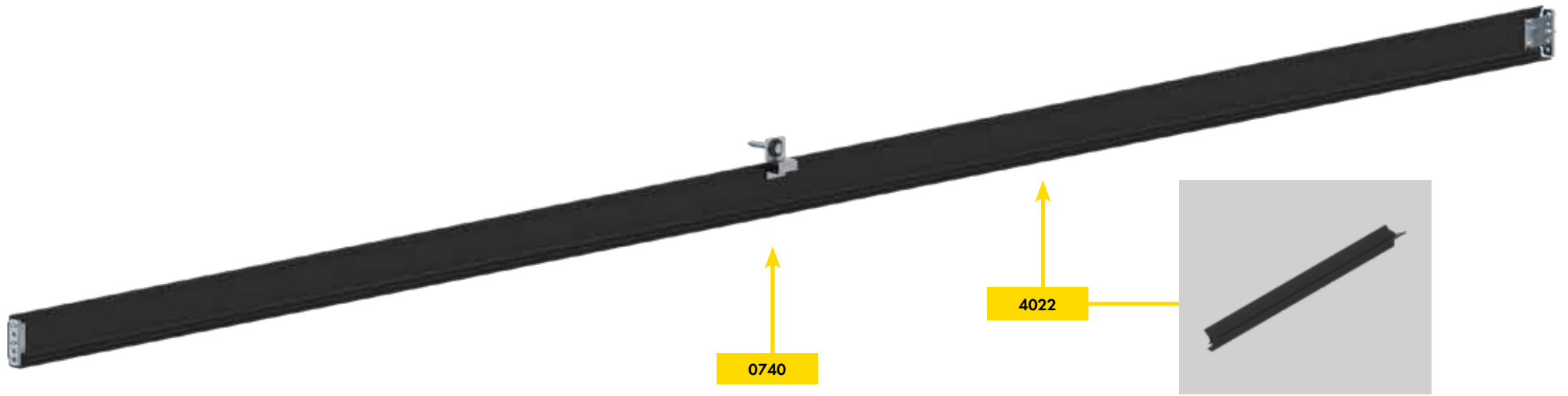
Step 1: Remove 107 mm to make the track suitable for manually operated doors.



Step 2: Install the aluminium curve (3998/3999).



LINTEL



INDIVIDUAL PARTS



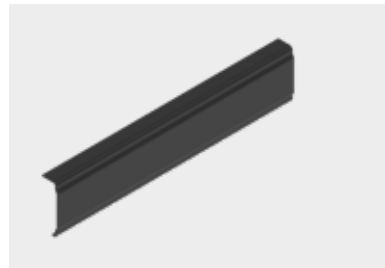
0566



0567



0568



0740



0751



0754



0760



0763



0770



0771L



0771R



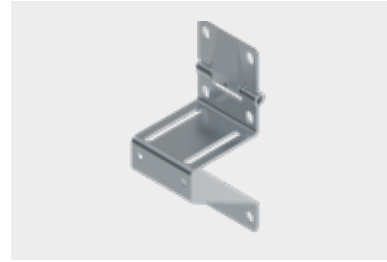
0776



3147



3158



3206 (C9922)



3218 (C9922)



3220



3645



3804 (C9922)



3814 (C9922)



3949



3998



3999



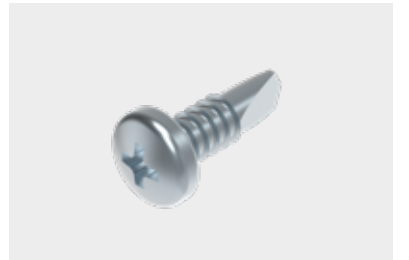
4022-...



4130-...



44.. -> ...



8003



8046



8080



8280



8285 (C9922)



8364



8383



8403



8404



8406



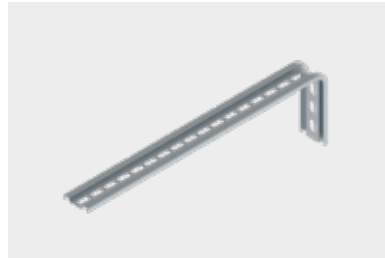
8418



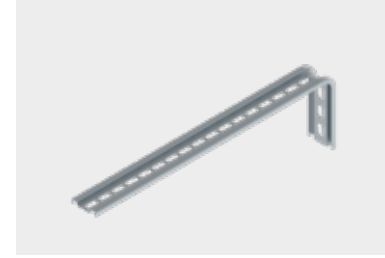
8978



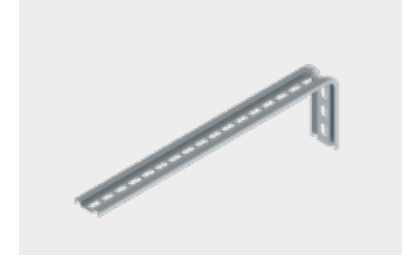
93706-...



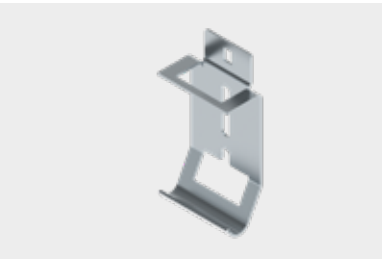
94040 (176 mm)



94041 (350 mm)



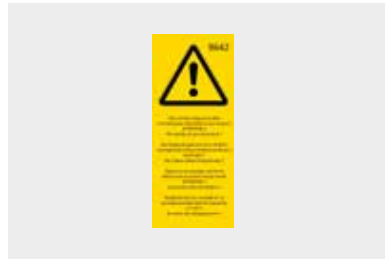
94042 (408 mm)



94043



9634



9642



C9510-...



C9520-...



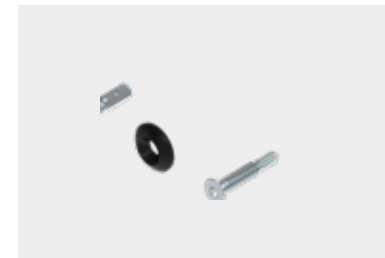
C9784-...



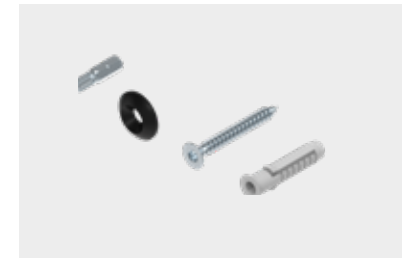
C9787



C9830-...



C9958



C9959

LOCKS MANUAL OPERATION

Cylinder snap lock ALU



Item nr. ALU C3858

Outside view



Inside view



Only possible with 110 mm head room

Cylinder snap lock black



Item nr. BLACK C3857

Outside view

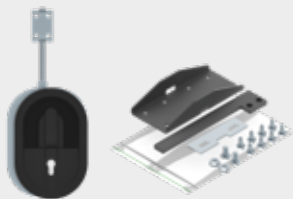


Inside view



Only possible with 110 mm head room

Cylinder lock oval black



Item nr. C9839 + C3642

Outside view

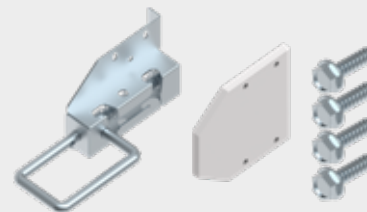


Inside view



Only possible with 100 mm head room

Slide lock



Item nr. 3639 + 7873 + 4x 3812

Outside view



Inside view



Only possible with 100 mm head room

HANDY PACKAGING OF HARDWARE SYSTEM

The TS100 system is delivered in ISPM pallets, to make transport of the track system as simple as possible. These pallets can be easily stacked and recycled!

The curved sections are supplied separately, in order to simplify transport and minimise the risk of damage. Also available in bulk (ERA).





